



WL 0685 S-Style Multi-Style Pro copper

- **Powerful BLDC motor for professional results**
With 1,300 to 1,500 watts, the advanced BLDC motor offers fast and efficient drying - ideal for salon-worthy results.
- **Elegant design and robust construction**
The aluminum housing combines stylish looks with durability and robustness so that the hairdryer always looks good and lasts a long time.
- **Versatile styling control**
Adjustable with three temperature and speed settings for customized results. The cool-shot function fixes the look and adds the finishing touches.
- **Ionic technology for shiny hair**
The integrated ionic function reduces frizz and ensures a smooth, shiny surface that leaves hair radiant.
- **Modern concentrator - for precise, fast styling**
The modern, narrow concentrator directs the airflow to specific areas. Perfect for smooth, sleek results or to create targeted volume at the roots.
- **Round brushes (33mm) - For luxurious waves**
Perfect for medium to long hair, this round brush allows you to create soft waves and voluminous styles.
- **Round brushes (50mm) - For precise, defined waves**
Ideal for long hair, this round brush creates large, voluminous curls and soft waves. It enables large sections of hair to be processed quickly and gives the look an elegant, voluminous finish.
- **Oval attachment - for voluminous and dynamic styles**
The 70 mm oval brush is ideal for styling long hair as it picks up evenly sized sections of hair. It creates soft waves and gives the hair impressive volume and a smooth finish.
- **Paddle brush attachment - For smooth, sleek styles**
The brush attachment gently smoothes the hair and leaves a silky, shiny finish. Ideal for natural, smooth styling that lasts all day.
- **2.80 meters of styling freedom**
With a 2.80 meter cable, the appliance offers maximum styling flexibility.
- **Self-cleaning function**
Thanks to the self-cleaning function, the styler remains durable and efficient.

Overview of important data

Power	1400 Watt
Colour / Material	copper / black / Aluminium / Plastic
Cable length	280 cm
Packing dimensions (WxDxH)	30.5 x 8.8 x 23.5 cm
Gross weight incl. packaging	1.19 kg
Dimensions of the product (WxDxH)	25.5 x 4.5 x 4.5 cm
Net weight	0.40 kg
Display box	4 Pc.
EAN	4008146049293
Further special features	<ul style="list-style-type: none"> - On-off button: yes - Indicator light: yes - Power levels: 3 - Heat levels: 3 - Number of attachments: 5

Product details



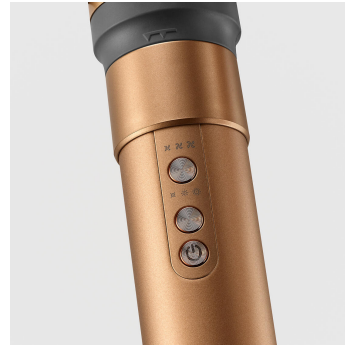
Powerful BLDC motor for professional results:

The advanced BLDC motor offers fast and efficient drying – ideal for salon-worthy results.



Elegant design and robust construction

The aluminum housing combines stylish looks with durability and robustness so that the hairdryer always looks good and lasts a long time.



Versatile styling control

Adjustable with three temperature and speed settings for customized results. The cool-shot function fixes the look and adds the finishing touches.



Ionic technology for shiny hair

The integrated ionic function reduces frizz and ensures a smooth, shiny surface that leaves hair radiant.



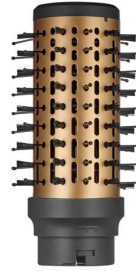
Modern concentrator - for precise, fast styling

The modern, narrow concentrator directs the airflow to specific areas. Perfect for smooth, sleek results or to create targeted volume at the roots.



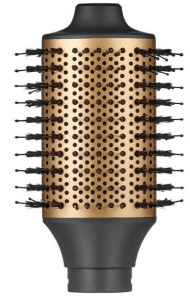
Round brushes (33mm) - For luxurious, large curls

Perfect for medium to long hair, this round brush allows you to create soft waves and voluminous styles.



Round brushes (50mm) - For precise, defined waves

Ideal for long hair, this round brush creates large, voluminous curls and soft waves.



Oval attachment (70mm) - For voluminous and dynamic styles

The oval brush is ideal for styling long hair. It creates soft waves and impressive volume.



Paddle brush attachment - For smooth, sleek styles

The brush attachment gently smooths the hair and leaves a silky, shiny finish. Ideal for natural, smooth styling that lasts all day.



2.80 meters of styling freedom

With a 2.80 meter cable, the appliance offers maximum styling flexibility.



Self-cleaning function

Thanks to the self-cleaning function, the styler remains durable and efficient.